



Company Profile

July ,2025

security code : 6545



INTERNET INFINITY

Copyright© internet infinity Inc. All Rights Reserved.

Healthy Future

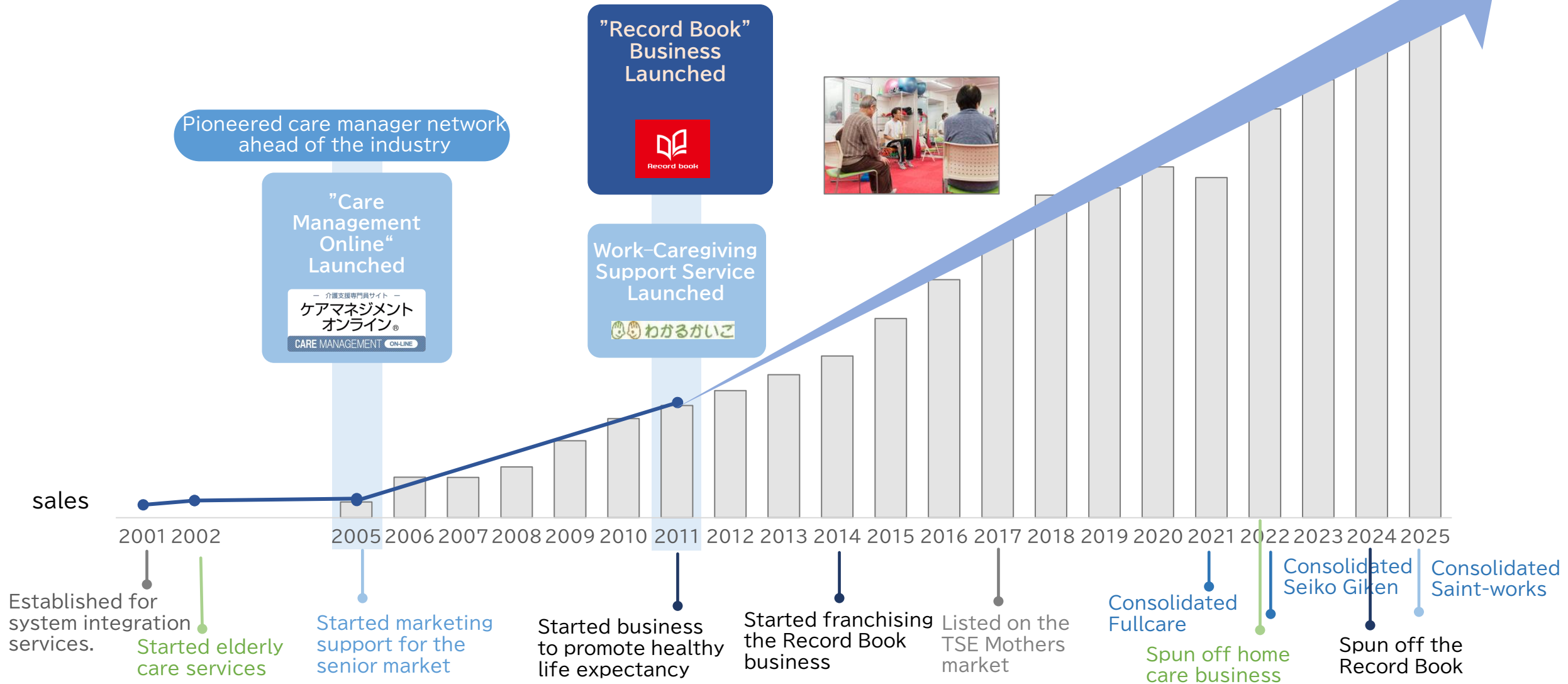
We aim to build a healthy future where all generations can live actively and with peace of mind, by addressing the challenges of an unprecedented super-aged society through creativity, innovation, and bold action.

Company outline

Company name	internet infinity INC.
Head office	2F, Kowa Nibancho Building, 11-19 Nibancho, Chiyoda-ku,Tokyo 102-0084, Japan
Established	May 7, 2001
Representative director	Keiichi Beck
Capital	252,302,686 yen (as of March 31, 2025)
Number of Employees	Consolidated Total : 353 (as of March 31, 2025)
Business	<div><div>■ Healthcare Solution Business</div><div>● Record Book Business ● Active Life Business ●DX Solution Business</div><div>■ Home-Centered Service Business</div></div>
Listing	Tokyo Stock Exchange Growth Market (security code : 6545)
consolidated subsidiary	● Recordbook ● Fullcare ● Seikougiken ● Saint-works ● Kankeisya

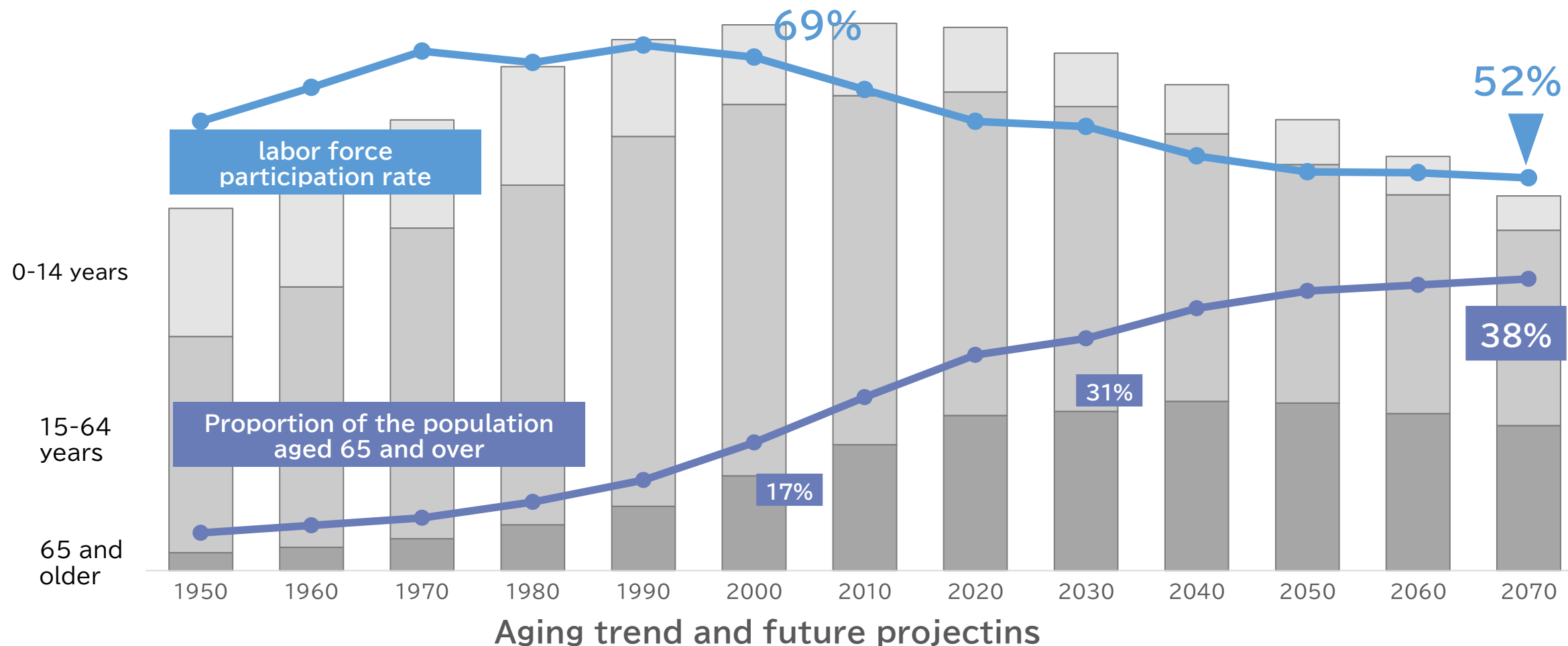
Company History

Expanding Healthcare Services via Real and Digital Channels

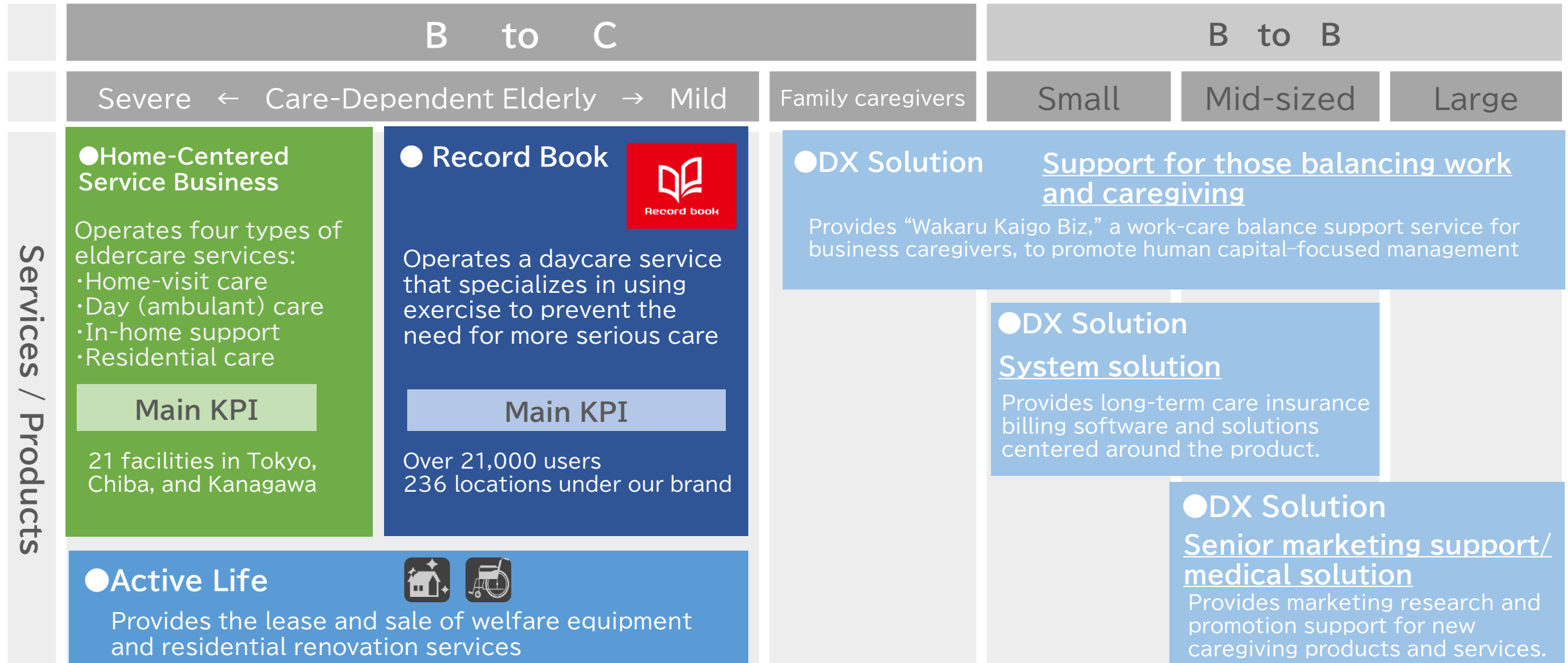


Business environment

Japan faces rising social security costs, care worker shortages, and a shrinking workforce due to its aging population.



We are developing BtoC and BtoB businesses
to create a healthy future across diverse sectors.



Sales Composition of the IIF Group

Healthcare Solution Business

1,848 million yen **35.8%**

Record Book

3-hour rehabilitation-focused daycare service specializing in exercise instruction
Expanded via Direct and Franchise Stores

 Record book
342 million yen **6.6%**

DX Solution

- Senior marketing support/medical solution
- Support for those balancing work and caregiving
- DX solution

介護支援専門員サイト
ケアマネジメント
オンライン

わかるがいど Biz
仕事と介護の両立支援サイト

Home-Centered Service Business

31.1% 1,607 million yen

Home-Centered Service

- Home-visit eldercare services
- Ambulant care services (Day services)
- In-home eldercare support services
- Residential Care Services



わかるがいど
相談センター

豊かな日常生活のお手伝い
クローバーケアステーション

26.4% 1,362million yen

Active Life

- Rental and sales welfare equipment
- Home renovation





3-Hour Rehabilitation Day Service Specializing
in Exercise Instruction
(Mainly for certified care recipients from
Support Level to Care Level 2)



Three Key Features of Record Book

1. space that doesn't feel like care

fitness club-like facility with a
non-institutional design,
welcoming to first-time users.

2. Professional Exercise Guidance

Evidence-Based Exercise to
Support Daily Function, with
Individualized Guidance

3. Hospitality

Energetic and courteous staff
create a lively, welcoming
atmosphere.

Main KPI

※As of November 2024

Over **21,000** users

236 stores (company-owned **24** Franchise **192** Meitetsu-Recordbook **20**)

We have expanded to 26 prefectures, with approximately 150 stores in the Kanto region

Stay true to yourself—at every age. From being cared for, to taking the lead in
your own life. Enjoy the freedom to do what you love, for as long as you live.

The Care Manager Support Portal Site "Care Management Online"

Member Portal with 100,000+ Registered Care Managers Essential Portal for Care Management Work

Business support tool

Downloadable forms for care plans and long-term care insurance applications

A document creation support tool utilizing ChatGPT was launched in 2023

Delivery of caregiving-related news

Legal & Industry News Updates for Care Professional

Message board

A platform for care managers nationwide to connect and share ideas

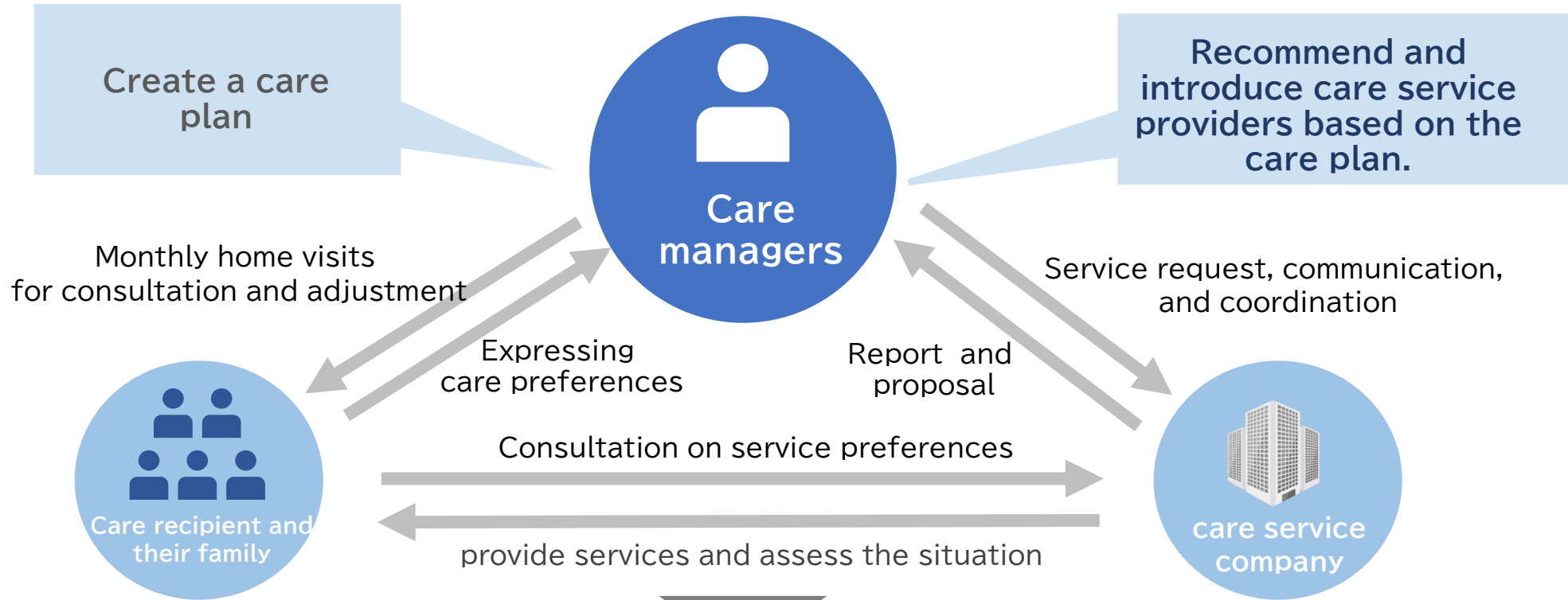
Care facility search

Listing care service providers nationwide with user reviews



Role of the Care Manager

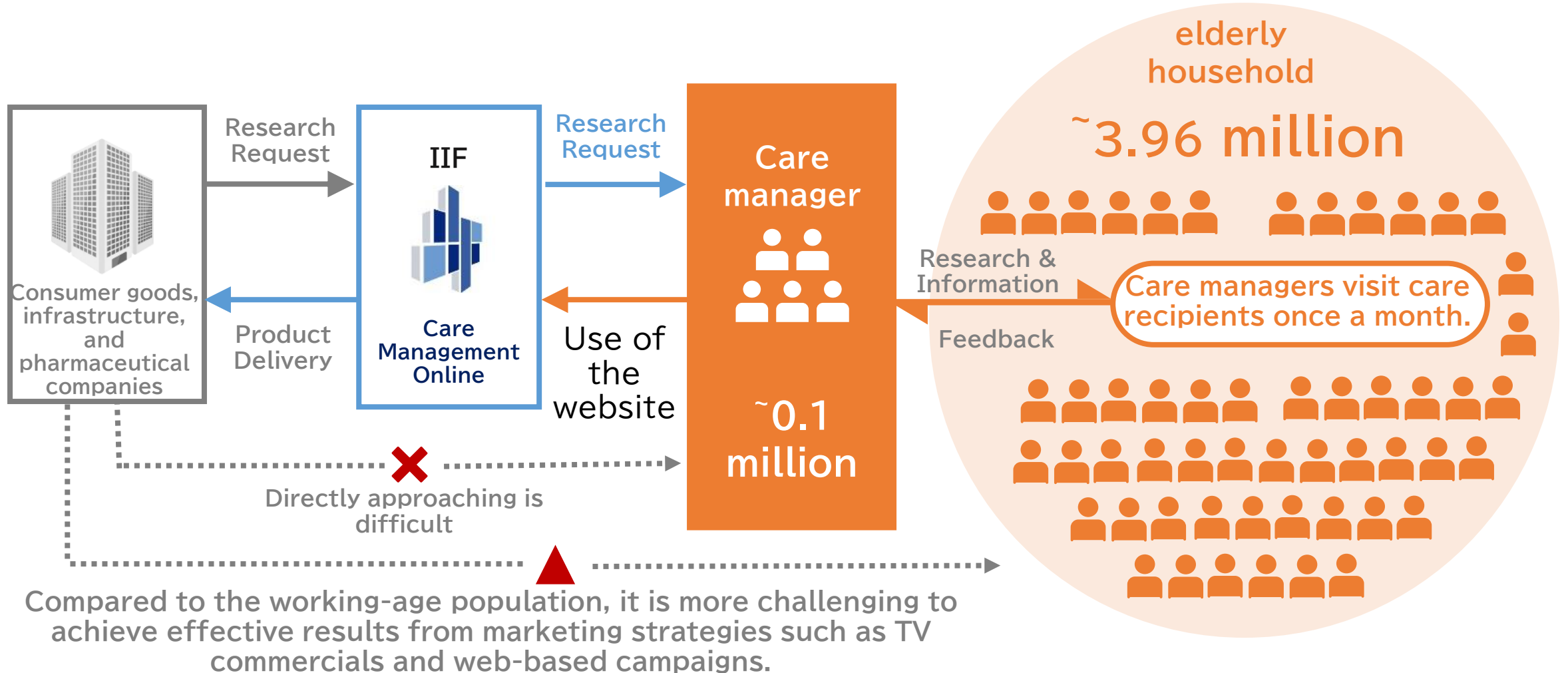
Care services require a referral from a care manager
Monthly follow-up with elderly individuals and their families after service initiation



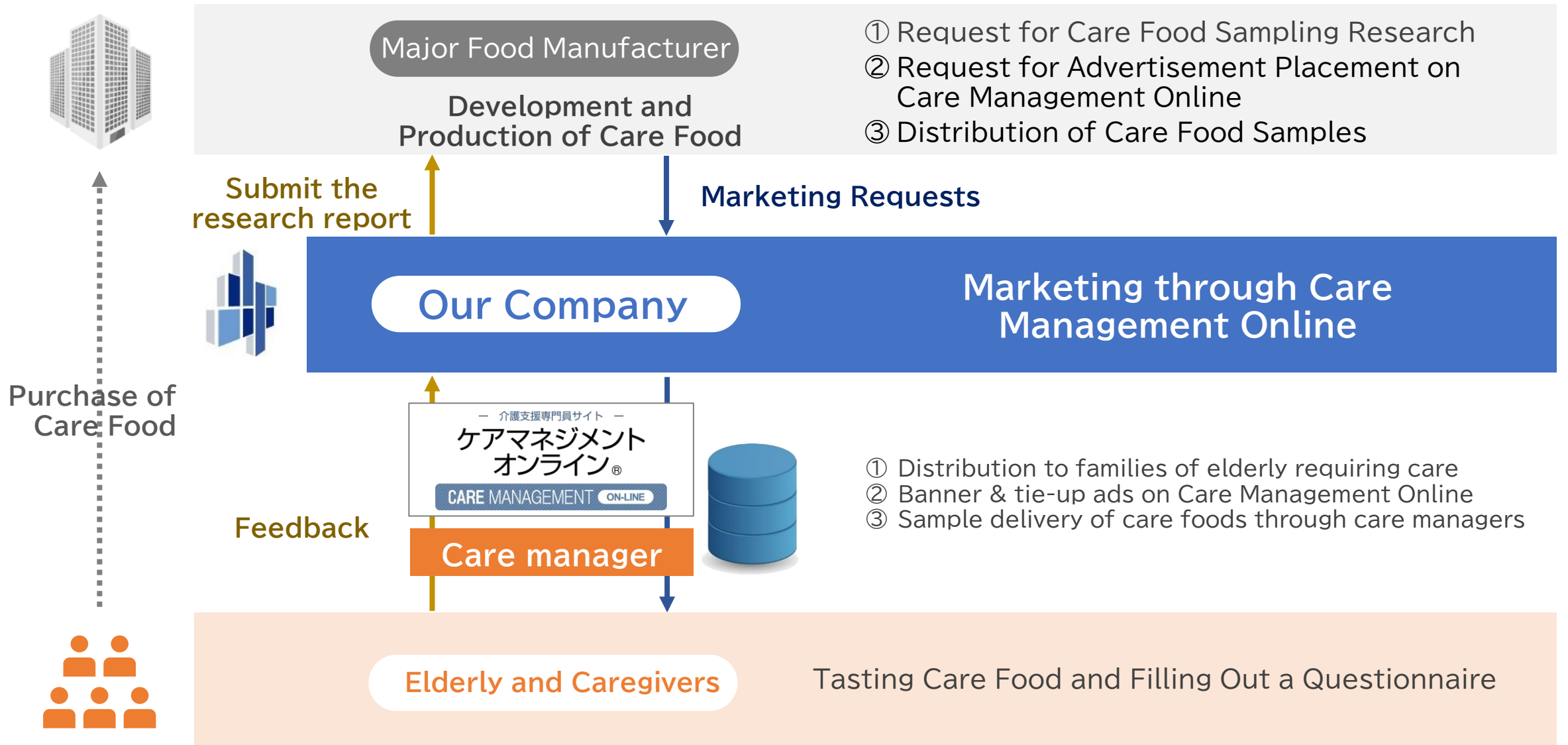
Care managers are key figures in the long-term care insurance system.

Business Overview

Efficiently reaching 3.96 million senior households via care managers
High-impact outreach through trusted care manager networks

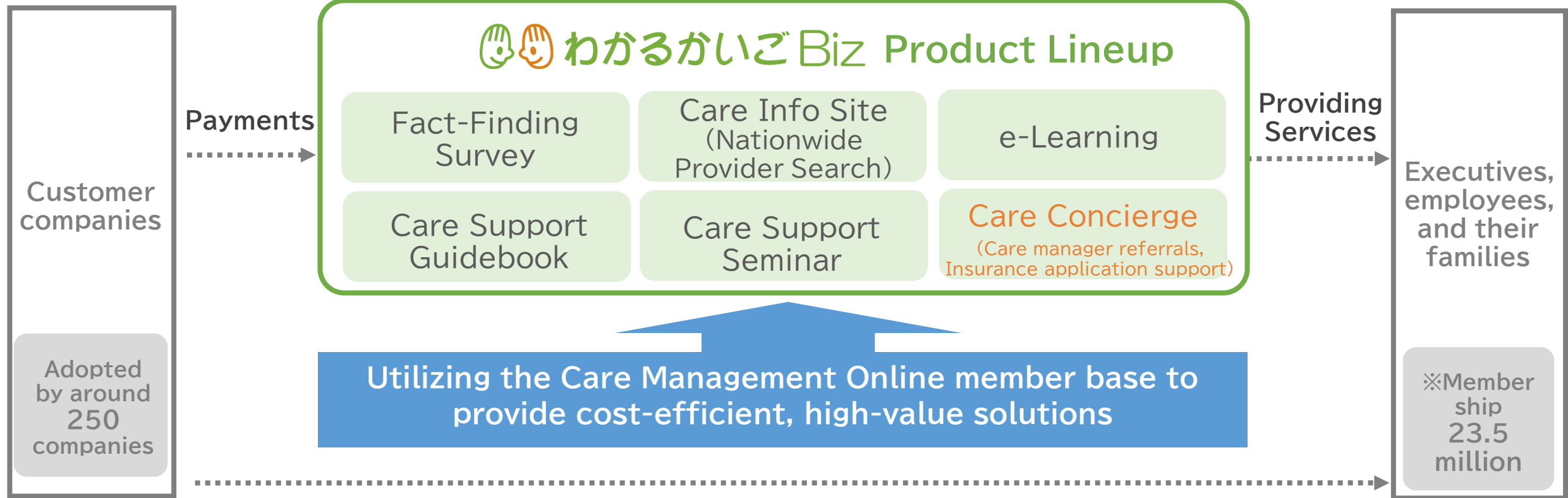


Marketing support for the senior market (Case Example)



Support for those balancing work and caregiving

Support services for employees balancing work and caregiving at contracted companies
Aligned with the 2025 law revision, contributing to career continuity,
human capital management, and labor shortage risk management



Introduction of Employee Benefits System

※Total Employees at Annual Contracted Companies

System solution

Providing systems that improve productivity for care providers
Comprehensive efficiency and management support through third-party integration

■ Software Solutions for Care Providers

Services	Contents
SuisuiRemon	Billing software designed for full receivables collection and 200+ Excel reports.
Kango no Ai chan	Assessment software with protocols for home-visit nursing.
Connect Care	Care record software for day services and short stays, supporting everything from documentation to billing and revenue forecasting.

■ Operational Support Services for Care Providers

IT Device Sales & Leasing	Providing care support software with PCs and tablets as a package
Postcard creation and mailing services	Invoice and receipt mailing services

■ Work-Life Balance Consulting

Fostering better workplaces through training and expert support

Business Overview

Expanding from Assistive Device Services and Home Renovation to Diversified Solutions through New Business Development and M&A

■ Current Services

Item	Insurance	Business Description	Number of Locations
Welfare Equipment Rental and Sales	Covered	Assistive device rental and sales by certified consultants, tailored to the needs of seniors and families	11 locations in Tokyo and Hiroshima
Home Modification	Covered	Home modifications arranged by certified consultants to enhance senior living environments	11 locations in Tokyo and Hiroshima
Home Renovation	Not Covered	Providing home renovations and remodeling services for individual clients to improve their living environment.	2 locations in Hiroshima

■ Services in Development


 Record book


Welfare Equipment



Home Renovation

- ◆ Testing Assistive Equipment Services at Record Book Stores
- ◆ Extending Preventive Care Beyond Store Visits with Equipment Support

Business Overview

Four Core Services to Support a Secure Life for Elderly with Moderate to Severe Needs



カンケイ舎

■Home-visit eldercare

Services

Personal and daily living care by home helpers

Locations

5 locations in Tokyo & Chiba

■Ambulant care services (Day services)

Services

Daycare services including personal care and functional training

Locations

6 locations in Tokyo & Chiba

■In-home eldercare support services

Services

Support for care recipients through care planning by care managers.

Locations

8 locations in Tokyo & Chiba

■Residential Care

Services

Operating residential-type paid senior housing

Locations

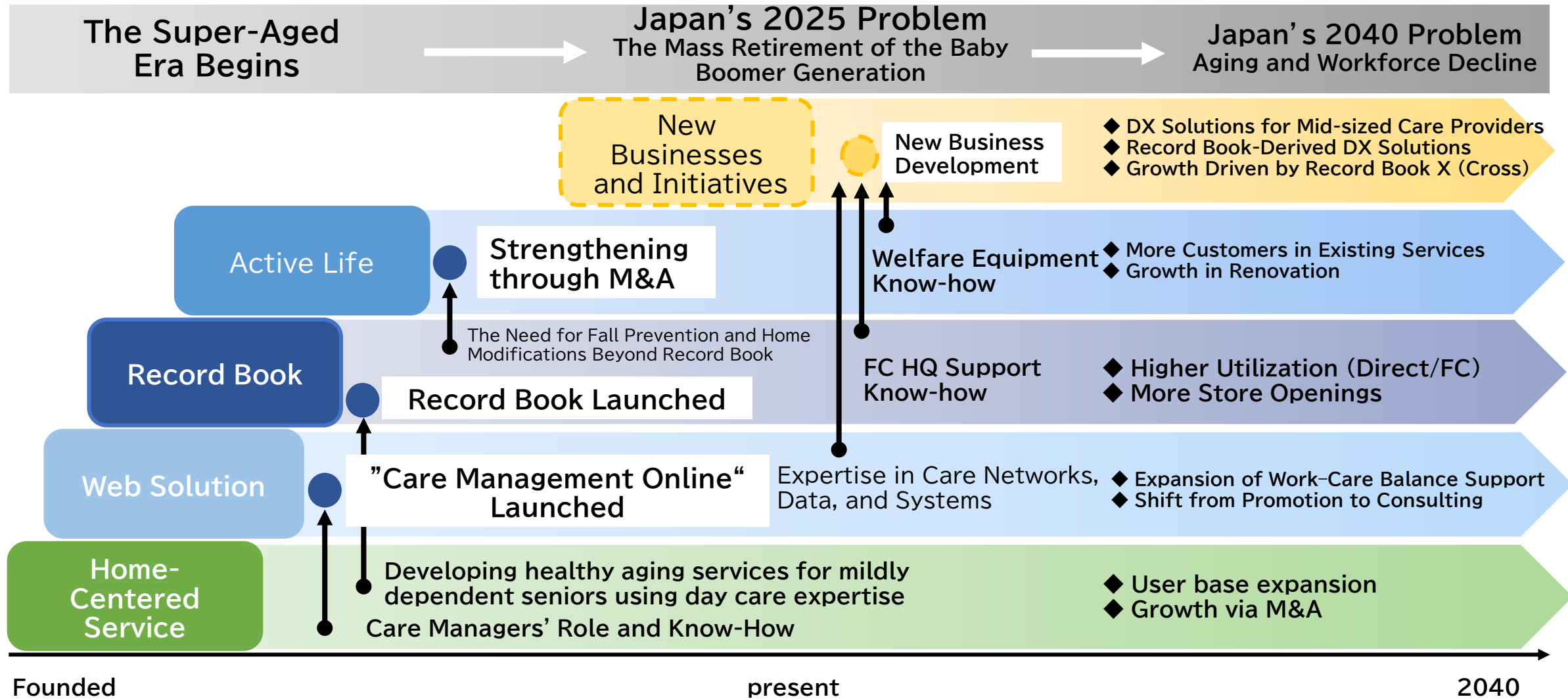
5 locations in Kanagawa & Chiba



Residential care business progressing steadily, backed by 20 years of expertise. Further expansion planned to meet diverse needs.

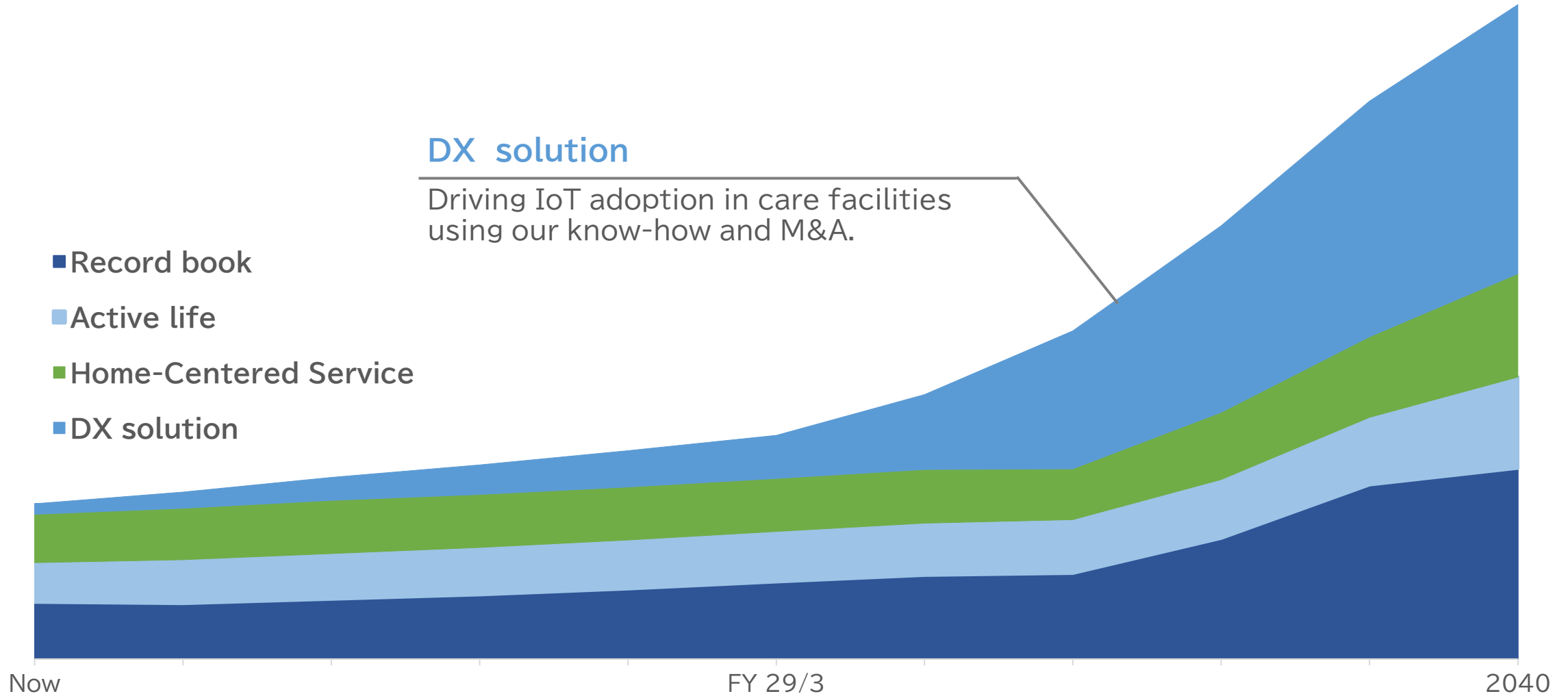
Growth Scenarios by Business Segment

Leveraging Long-Built Expertise to Tackle Social Challenges



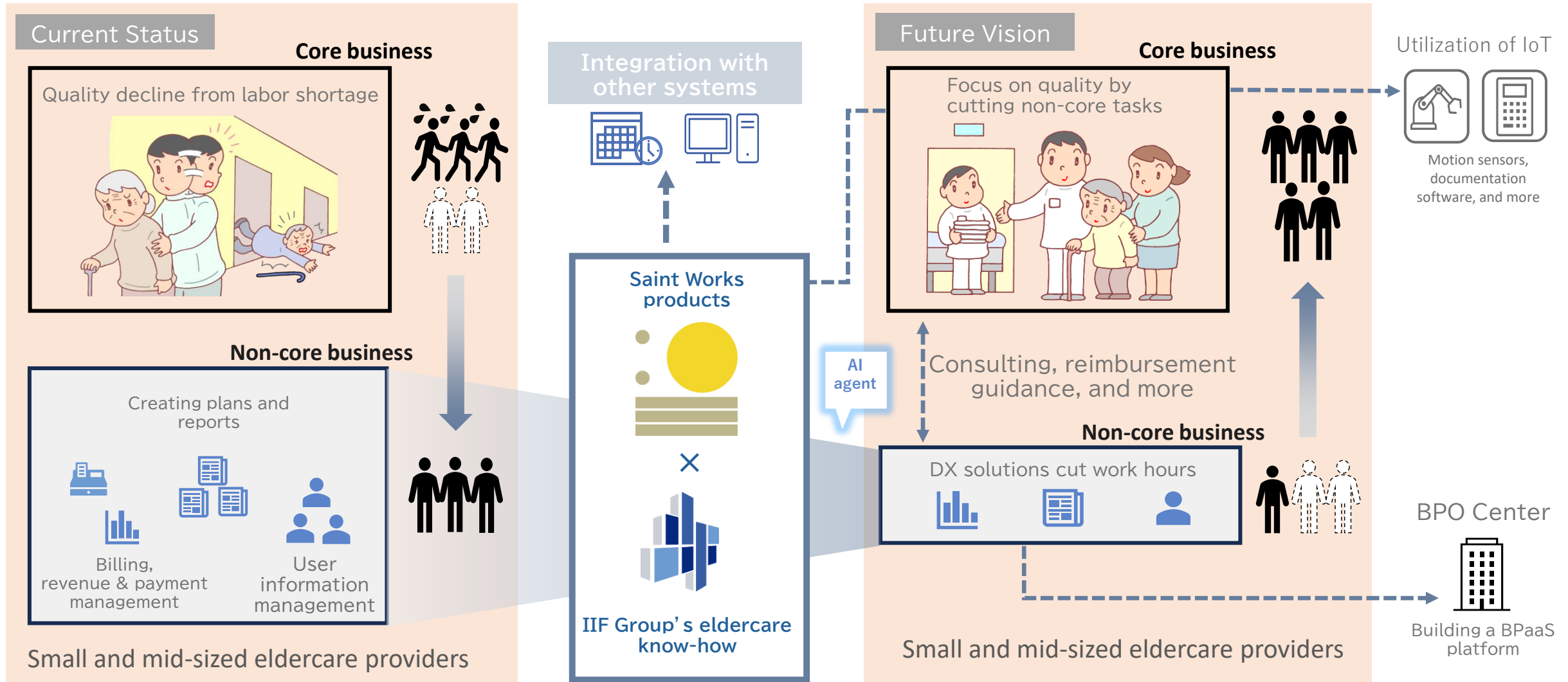
Mid- to Long-Term Strategy Image

We aim to realize a healthier future by expanding our existing businesses and addressing the challenges of 2040 through DX and new business development.



Concept for DX Solutions Business

Comprehensive support for small and mid-sized care providers, leveraging Saint Works' products and IIF Group's operational know-how.



Performance Trends and Plans

	FY3/22	FY3/23	FY3/24	FY3/25	FY3/26	FY3/27	FY3/28	FY3/29
(Unit: JPY million)	Result				Forecast	Target		
Net sales	4,168	4,464	4,959	5,161	6,007	6,863	7,549	8,045
Operating profit	156	96	230	401	530	727	1,015	1,275
Profit attributable to owners of parent	186	33	130	255	310	431	605	750
ROE (%)	15.0	2.7	9.8	16.8	17.2	23.1	25.4	24.5
Operating profit margin(%)	3.7	2.2	4.6	7.8	8.8	10.6	13.5	15.8
EPS (¥)	34	6	24	47	57	79	111	138

Performance Trends and Plans(segment)

		FY3/25		FY3/26		FY3/27		FY3/28		FY3/29	
		Result		Forecast		Target					
(Unit: JPY million)		Net sales	Operating profit	Net sales	Operating profit	Net sales	Operating profit	Net sales	Operating profit	Net sales	Operating profit
■ Existing Business											
■ Healthcare Solution Business		3,554	525	4,304	721	4,926	922	5,334	1,203	5,798	1,464
	Record Book	1,848	382	1,928	503	1,994	573	2,094	708	2,181	805
	Active Life	1,362	71	1,193	124	1,250	147	1,309	169	1,392	197
	DX Solution	342	71	1,181	93	1,681	200	1,931	325	2,224	461
■ Home-Centered Service Business		1,607	338	1,703	411	1,937	420	2,214	435	2,246	442
Adjustment amount		—	▲463	—	▲601	—	▲615	—	▲622	—	▲631
Existing Business Total		5,161	401	6,007	530	6,863	727	7,549	1,105	8,045	1,275

Financial Highlights

■ Consolidated statement of income

Unit: JPY million	FY3/23	FY3/24	FY3/25
Net sales	4,464	4,959	5,161
Gross profit	1,649	1,843	2,043
Operating profit	96	230	401
Ordinary income	146	271	411
Profit before income taxes	104	243	408
Profit attributable to owners of parent	33	130	255

■ Consolidated statement of cash flows

Unit: JPY million	FY3/23	FY3/24	FY3/25
Operating cash flow	302	379	467
Investment cash flow	▲301	15	▲227
Financing cash flow	▲24	61	497
Net increase (decrease)	▲23	456	736

■ Consolidated balance sheet

Unit: JPY million	FY3/23	FY3/24	FY3/25
Current assets	2,048	2,603	3,306
Non-current assets	1,135	1,148	1,022
Total assets	3,184	3,751	4,328
Current liabilities	1,456	2,081	1,966
non-current liabilities	439	282	715
Total liabilities	1,896	2,363	2,681
Capital	252	252	252
Capital surplus	237	239	237
Retained earnings	822	952	1,157
Treasury shares	▲23	▲56	▲0
Total net assets	1,288	1,388	1,647
Total liabilities and net assets	3,184	3,751	4,328

Disclaimer on Forward-Looking Statements

The performance forecasts presented in this document are based on information currently available and reflect certain assumptions and expectations. These projections involve risks and uncertainties, and actual results may differ significantly due to various factors.

Factors that may affect actual performance include, but are not limited to:

- changes in the business environment,
- economic downturns,
- legal or regulatory developments,
- and unfavorable litigation outcomes.

Please be advised that these are not the only potential risks.



INTERNET INFINITY

Copyright© internet infinity Inc. All Rights Reserved.

202506